



**Dia** light

**Acidic gel-crème demi.**

Zero ammonia. Zero lift. Ultra conditioning.

**L'ORÉAL**

**PROFESSIONNEL**

PARIS

# Dia light

L'ORÉAL  
PROFESSIONNEL  
PARIS



**Controlled application.**  
Gel-crème consistency for precision application.



**Flexible processing time.**  
(2-20 minutes).



**+30% more conditioning\*.**  
Conditions hair after lightening and color services.

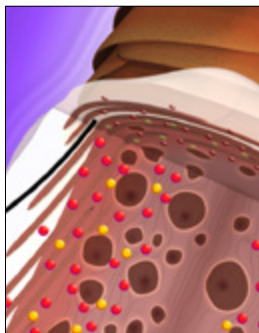
\*vs. uncolored hair

## The science behind Dia Light.



### Before color.

On color-treated & sensitized hair, the cuticle scales are already open.



### During color.

Dia Light has an acid pH close to the natural pH of the hair. There is no lift with gentle penetration of colorants for long lasting color.



### After color.

The cationic polymers in Dia Light have a resurfacing effect on the cuticle, leaving the hair with amazing shine.

# Dia light

L'ORÉAL  
PROFESSIONNEL  
PARIS

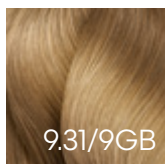
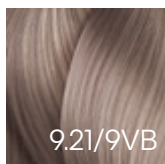
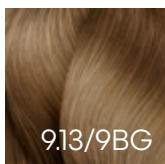
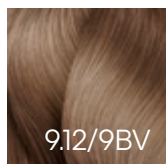
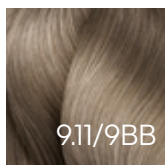
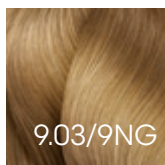
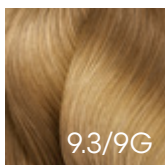
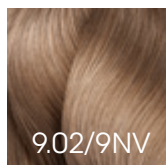
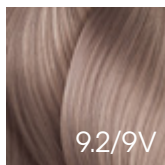
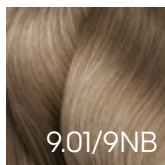
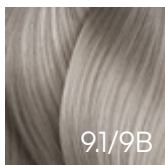
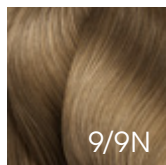
## Tone high-level blondes.

with new Dia Light Iridescent Milkshake 9.2/9V.



@medobajhair

## Spotlight on level 9 Milkshakes.



# Dia light

L'ORÉAL  
PROFESSIONNEL  
PARIS



## [Introducing] Dia Light Liquifier.

### **Fast application.**

Liquifies consistency for fast bottle application.

### **Ultimate customization.**

Consistency changes based on client need & stylist preference.

### **Adjust color intensity.**

To increase transparency and shine.

## Blues & Greens

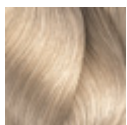
.01/NB

.1/B

.07/NGr

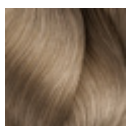
.11/BB

10

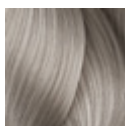


**10.01/10NB**  
Soft Frosty  
Milkshake

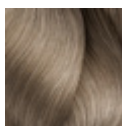
9



**9.01/9NB**  
Frosty Milkshake

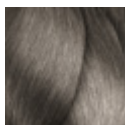


**9.1/9B**  
Icy Milkshake



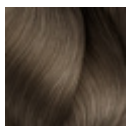
**9.11/9BB**  
Iceberg  
Milkshake

8



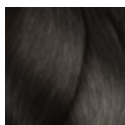
**8.1/8B**  
Iced Latte

7

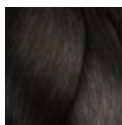


**7.01/7NB**  
Natural Frost

6

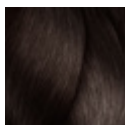


**6.1/6B**  
Cool Almond

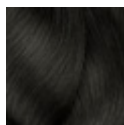


**6.11/6BB**  
Charcoal

5



**5.1/5B**  
Cool Smoked  
Walnut



**5.07/5NGr**  
Sage

4

## Violets

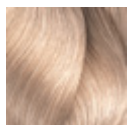
.02/NV

.2/V

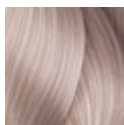
.21/VB

.22/VV

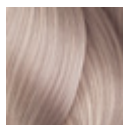
10



**10.02/10NV**  
Soft Pearly  
Milkshake

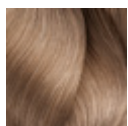


**10.21/10VB**  
Pearl Sorbet  
Milkshake

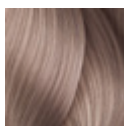


**10.22/10VV**  
Iridescent Berry  
Milkshake

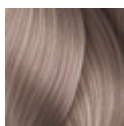
9



**9.02/9NV**  
Pearly  
Milkshake

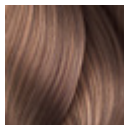


**9.2/9V**  
Iridescent  
Milkshake



**9.21/9VB**  
Sorbet  
Milkshake

8



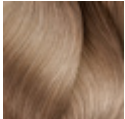
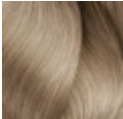
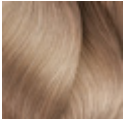
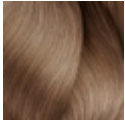
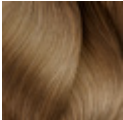
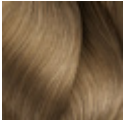
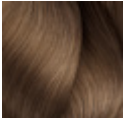
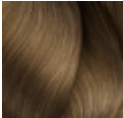
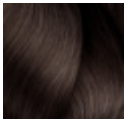
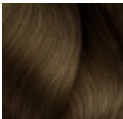
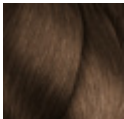
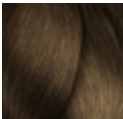
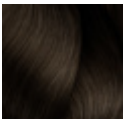
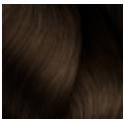
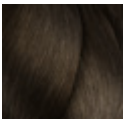

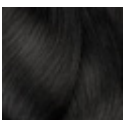
**8.21/8VB**  
Icy Sorbet

7

6

5

4

	Cool Browns & Blondes			Mochas	Naturals
	.12/BV	.13/BG	.23/VG	.8/M	
10	 <b>10.12/10BV</b> Frosty Pearl Milkshake	 <b>10.13/10BG</b> Vanilla Macaroon Milkshake	 <b>10.23/10VG</b> Pearly Gold Milkshake		
9	 <b>9.12/9BV</b> Pearl Milkshake	 <b>9.13/9BG</b> Cool Buttercream			 <b>9/9N</b> Light Blonde
8			 <b>8.23/8VG</b> Lavender Honey		 <b>8/8N</b> Blonde
7	 <b>7.12/7BV</b> Cool Beige	 <b>7.13/7BG</b> Satin Blonde		 <b>7.8/7M</b> Mocha Latte	 <b>7/7N</b> Dark Blonde
6		 <b>6.13/6BG</b> Walnut	 <b>6.23/6VG</b> Hazelnut Honey		 <b>6/6N</b> Light Brown
5					 <b>5/5N</b> Brown
4					 <b>4/4N</b> Dark Brown

	Warm Browns & Blondes		Golds		
	.31/GB	.32/GV	.03/NG	.3/G	.34/GC
10		 <b>10.32/10GV</b> Sandy Milkshake			
9	 <b>9.31/9GB</b> Vanilla		 <b>9.03/9NG</b> Honey Milkshake	 <b>9.3/9G</b> Light Gold	
8				 <b>8.3/8G</b> Light Brown Sugar	 <b>8.34/8GC</b> Light Caramel
7	 <b>7.31/7GB</b> Almond			 <b>7.3/7G</b> Brown Sugar	
6				 <b>6.3/6G</b> Gingerbread	 <b>6.34/6GC</b> Honey Chestnut
5	 <b>5.31/5GB</b> Praline				
4					

## Coppers

.40/CCC

.43/CG

.45/CRv

.46/CR

## Reds

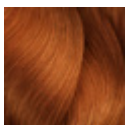
.64/RC

.66/RR

10

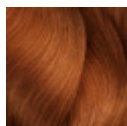
9

8

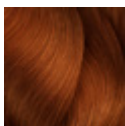


**8.43/8CG**  
Copper  
Sunset

7

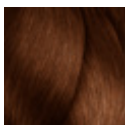


**7.40/7CCC**  
Firelight

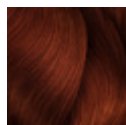


**7.43/7CG**  
Sunset  
Rubilane™

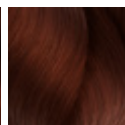
6



**6.45/6CRv**  
Cinnamon

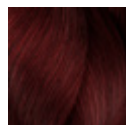


**6.46/6CR**  
Autumn  
DM5/ Rubilane™



**6.64/6RC**  
Garnet  
DM5/ Rubilane™

5



**5.66/5RR**  
Ruby  
DM5/ Rubilane™

4



Clear

# Color theory.

## Dual coding system

level	tone
10 pale blonde	<b>N</b> natural
9 very light blonde	<b>B</b> blue .1
8 light blonde	<b>V</b> violet .2
7 blonde	<b>G</b> gold .3
6 dark blonde	<b>C</b> copper .4
5 light brown	<b>Rv</b> red-violet .5
4 brown	<b>R</b> red .6
3 dark brown	<b>Gr</b> green .7
2 darkest brown	<b>M</b> mocha .8
1 black	

example:

**5GV**  
**5.32**

level of color

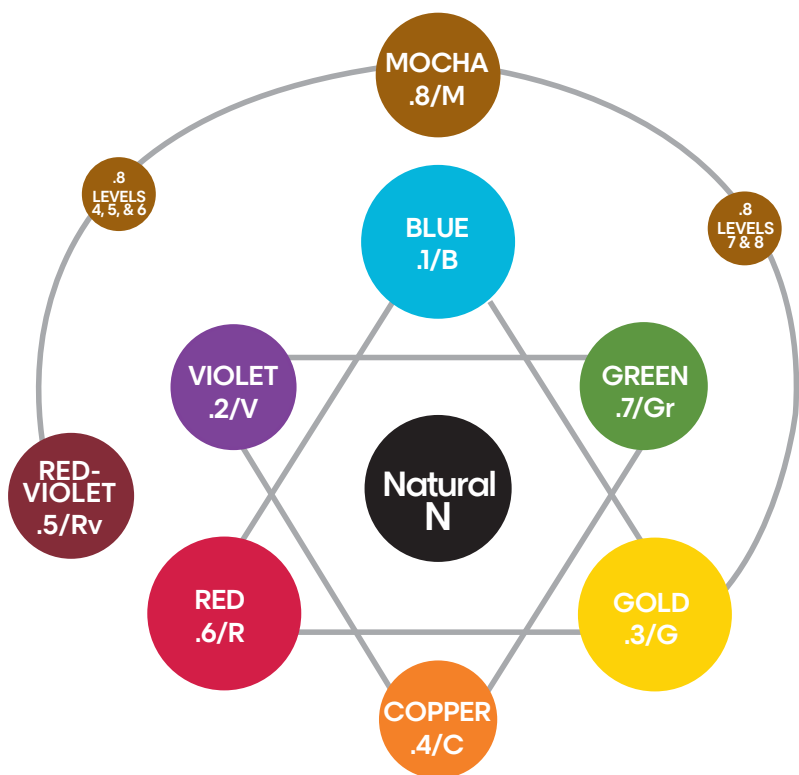
primary tone of color

secondary tone of color

# Color theory.

## Law of color

- Opposite colors on the color wheel will counteract or neutralize each other.
- Opposite colors on the color wheel are also complementary.



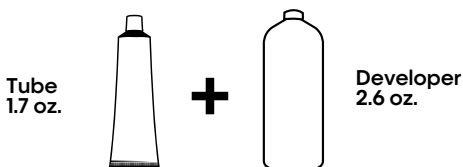
## Mixing guidelines.

### Preparation

#### 1:1.5 mixing ratio

1 tube (1.7 oz.) to 2.6 oz. Diactivateur developer

- Measure 2.6 oz. of 6-vol. (1.8%) or 9-vol. (2.7%) Diactivateur Developer, depending on the desired intensity of the result.



### Application

On dry hair, spray Metal Detox Pre-Treatment Spray on each section and apply Dia Light formula with a brush or a bottle on the re-growth, mid-lengths and ends.

**Flexible processing time:** 2 to 20 minutes

### Liquifier

#### [Best for]

- Fast, bottle application
- Toning all over

#### [How to use]

**Step 1:** Mix your Dia Light shade + Diactivateur developer at 1:1.5 Ratio.

**Step 2:** Add Dia Light Liquifier to formula and mix.

For half dose, add .2 oz. of liquifier. For full dose, add .4 oz. of liquifier.

\*Liquifier only to be used with Dia Light + Diactivateur developer.  
Liquifier is not a developer.

### Rinsing

When development time is complete, add a little warm water to the hair and gently emulsify.

Thoroughly rinse color from the hair and shampoo with Metal Detox Shampoo to pro guarantee your color result. Follow with Metal Detox mask.